

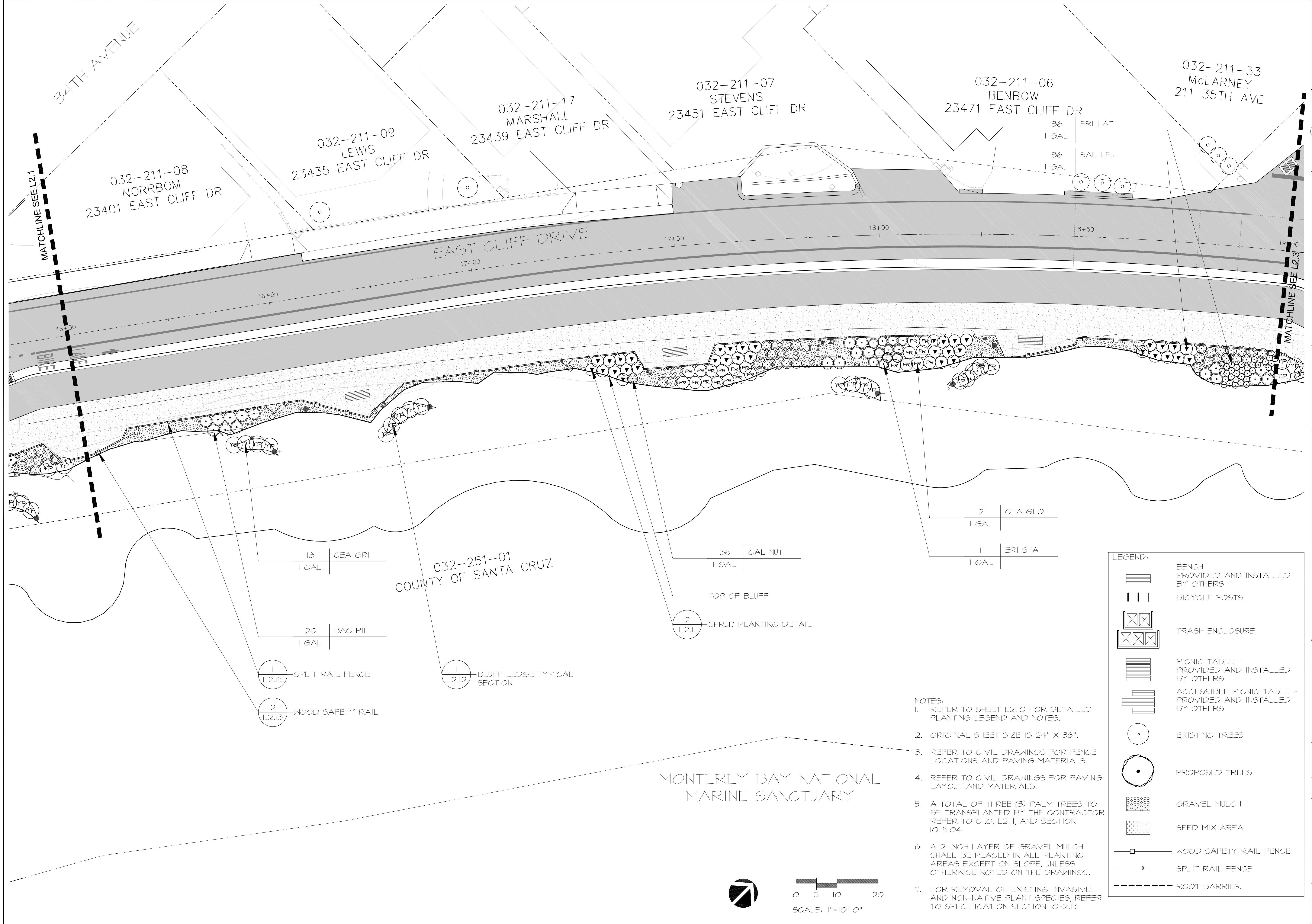


Santa Cruz County
 Design/Construction/Works
 701 Ocean St. Rm 410
 Santa Cruz, CA 95060-4100
 Phone: (831) 454-2160
 Fax: (831) 454-2385

PLANTING PLAN
EAST CLIFF DRIVE PARKWAY PROJECT
 32nd AVENUE TO 41st AVENUE
 County of Santa Cruz, California

REV	BY	DATE	DESCRIPTION
1	JLJ	03/22/10	75% SUBMITTAL
2	JLJ	10/08/10	95% SUBMITTAL
3	JLJ	01/12/11	BID SET

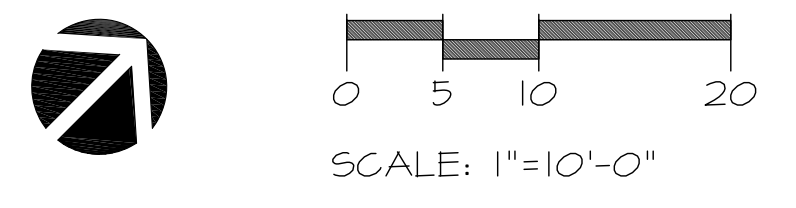
DATE: 01/12/2011
 SCALE: 1"=10'-0"
 DESIGNED BY: JLJ
 DRAFTED BY: EDMO
 CHECKED BY: JLJ
 JOB NO.: 08-150
 FILE: 132 EAST CLIFF PARKWAY PLANTING PLAN.rvt



LEGEND:

- BENCH - PROVIDED AND INSTALLED BY OTHERS
- BICYCLE POSTS
- TRASH ENCLOSURE
- PICNIC TABLE - PROVIDED AND INSTALLED BY OTHERS
- ACCESSIBLE PICNIC TABLE - PROVIDED AND INSTALLED BY OTHERS
- EXISTING TREES
- PROPOSED TREES
- GRAVEL MULCH
- SEED MIX AREA
- WOOD SAFETY RAIL FENCE
- SPLIT RAIL FENCE
- ROOT BARRIER

- NOTES:**
- REFER TO SHEET L2.10 FOR DETAILED PLANTING LEGEND AND NOTES.
 - ORIGINAL SHEET SIZE IS 24" X 36".
 - REFER TO CIVIL DRAWINGS FOR FENCE LOCATIONS AND PAVING MATERIALS.
 - REFER TO CIVIL DRAWINGS FOR PAVING LAYOUT AND MATERIALS.
 - A TOTAL OF THREE (3) PALM TREES TO BE TRANSPLANTED BY THE CONTRACTOR. REFER TO C.I.O, L2.II, AND SECTION 10-3.04.
 - A 2-INCH LAYER OF GRAVEL MULCH SHALL BE PLACED IN ALL PLANTING AREAS EXCEPT ON SLOPE, UNLESS OTHERWISE NOTED ON THE DRAWINGS.
 - FOR REMOVAL OF EXISTING INVASIVE AND NON-NATIVE PLANT SPECIES, REFER TO SPECIFICATION SECTION 10-2.13.



MONTEREY BAY NATIONAL MARINE SANCTUARY

032-251-01
 COUNTY OF SANTA CRUZ

- 18 CEA GRI
1 GAL
- 20 BAC PIL
1 GAL
- 1 L2.13 SPLIT RAIL FENCE
- 2 L2.13 WOOD SAFETY RAIL
- 1 L2.12 BLUFF LEDGE TYPICAL SECTION

- 36 CAL NUT
1 GAL
- 2 L2.II SHRUB PLANTING DETAIL

- 21 CEA GLO
1 GAL
- 11 ERI STA
1 GAL

- 36 ERI LAT
1 GAL
- 36 SAL LEU
1 GAL

